

**Tight up to 8 bar pressure
TÜV tested**

KLINGER® Wall Seal Ring

Perfect sealing of pipes in the masonry against infiltrating moisture



In case of infiltrating water, groundwater or elevated groundwater tables, the KLINGER Wall Seal Ring positioned on the pipe at the center of the masonry provides protection against the ingress of moisture.

KLINGER – The worldwide leader in seal technology



KLINGER Wall Seal Ring Type 7/5 (EPDM) Shore A/ Hardness 42 ±3

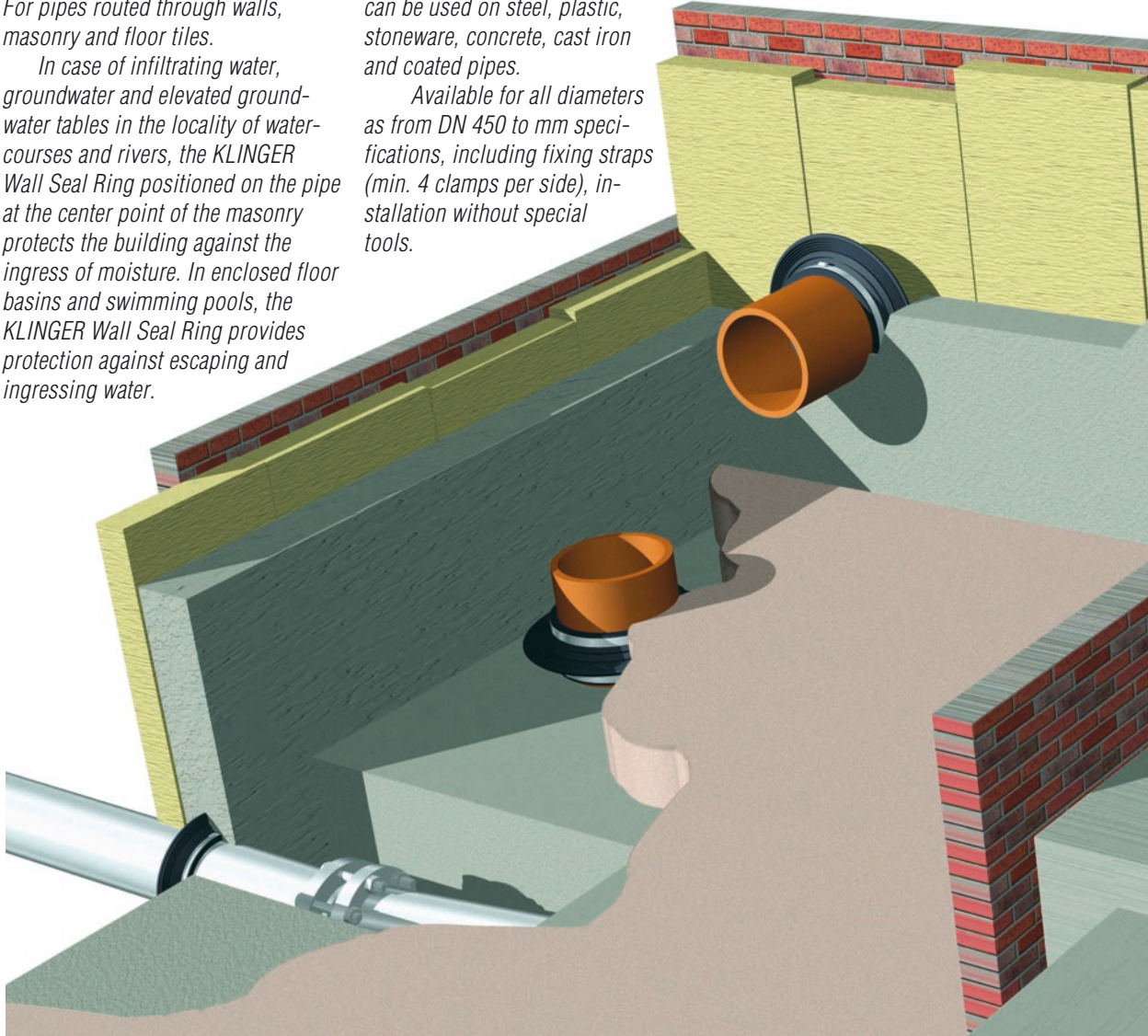
Applications

For pipes routed through walls, masonry and floor tiles.

In case of infiltrating water, groundwater and elevated groundwater tables in the locality of water-courses and rivers, the KLINGER Wall Seal Ring positioned on the pipe at the center point of the masonry protects the building against the ingress of moisture. In enclosed floor basins and swimming pools, the KLINGER Wall Seal Ring provides protection against escaping and ingressing water.

The KLINGER Wall Seal Ring can be used on steel, plastic, stoneware, concrete, cast iron and coated pipes.

Available for all diameters as from DN 450 to mm specifications, including fixing straps (min. 4 clamps per side), installation without special tools.



Special features of the KLINGER Wall Seal Ring

Carefully executed ribs on the internal diameter that seal tightly even on uneven pipe surfaces.

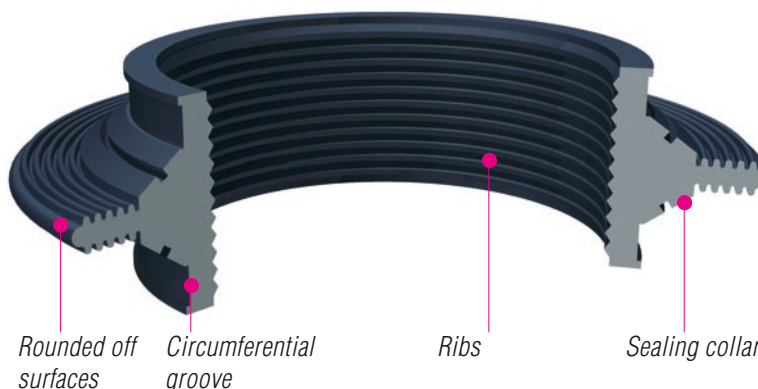
The 70 mm wide KLINGER Wall Seal Ring guarantees reliable adhesion on all pipe materials.

The solid transition point to the sealing collar with its internal reinforcing groove ensures geometrical

stability and dependability for installation. Under tough installation conditions, the section depth on the sealing collar ensures stable adhesion in the filler material.

The rounded-off surface permits good filler material penetration even when installing KLINGER Wall Seal Rings horizontally.

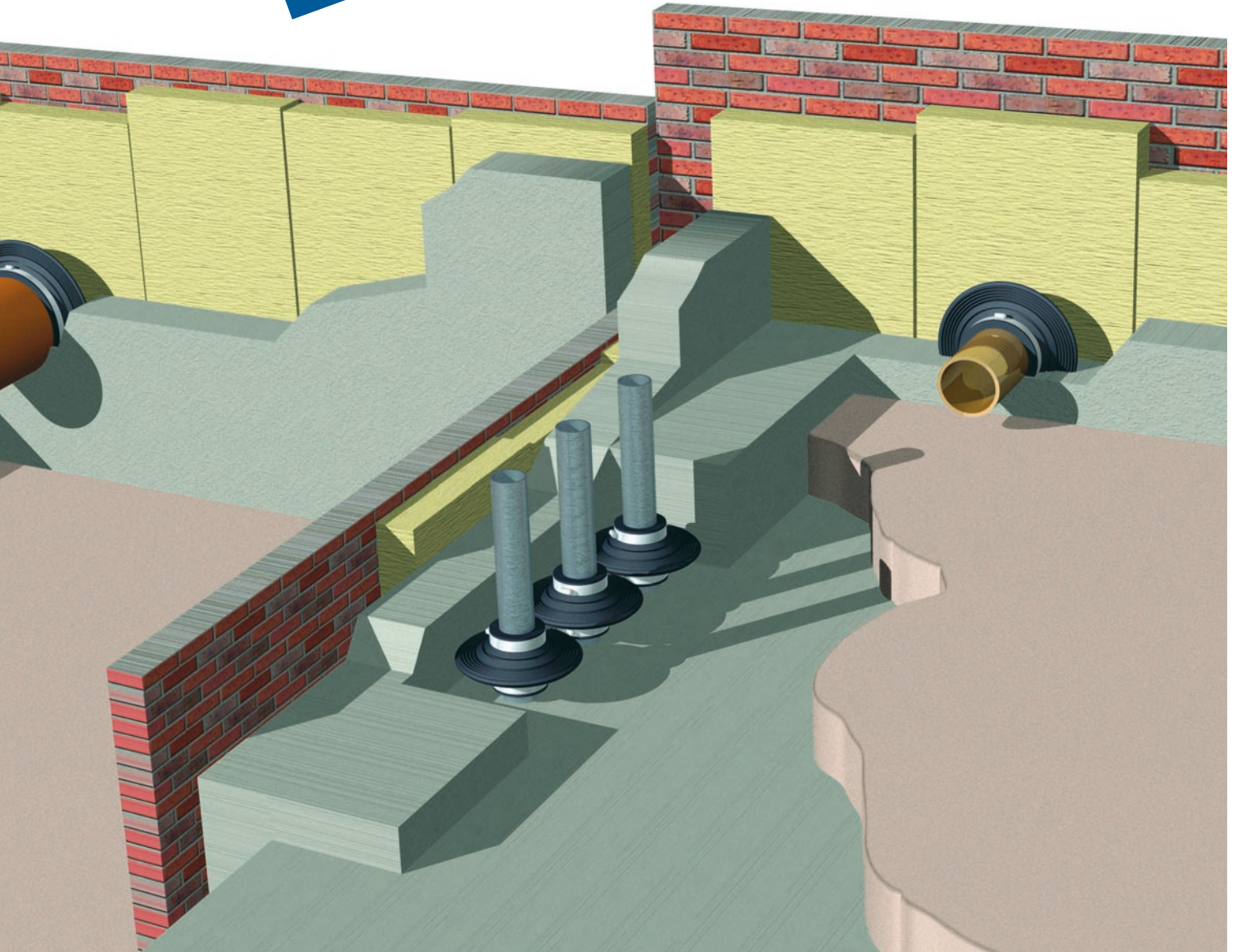
The circumferential groove featured on the exterior of both sides ensures trouble-free installation of the specially surface-treated fixing straps. The fixing traps are dimensioned to match the KLINGER Wall Seal Rings.





KLINGER Wall Seal Ring Type 7/5 (EPDM) Shore A/ Hardness 42 ±3

Tight up to 8 bar pressure
TÜV tested



The KLINGER Wall Seal Ring's flexibility permits installation on plastic, stoneware, concrete, cast iron, steel and coated pipes.

Installation instructions for KLINGER Wall Seal Rings

Diameter is stated on both sides of the KLINGER Wall Seal Rings.

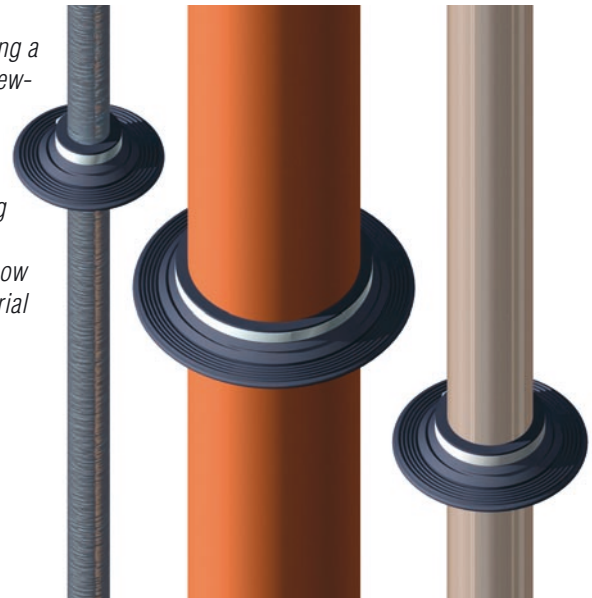
Irrespective of the pipe types, its surface must be clean and free of grooves and scoring.

The KLINGER Wall Seal Ring should be slipped onto the pipe and positioned at the center point of the masonry. Neutral soap solution can be applied to the pipe to assist installation.

The fixing straps should be tightened using a hexagon spanner or screwdriver.

Then check the correct seating of the KLINGER Wall Seal Ring again.

The piercing can now be filled with filler material (concrete etc.). Overlap should be not less than 3 mm.



Dimensions in mm.

Other sizes can be produced according to your specification.

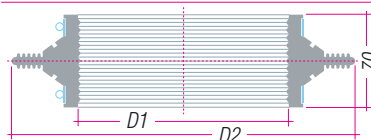
Sizes larger than DN 400 can be made of your specifications.

Please state the exact outer diameter in mm.

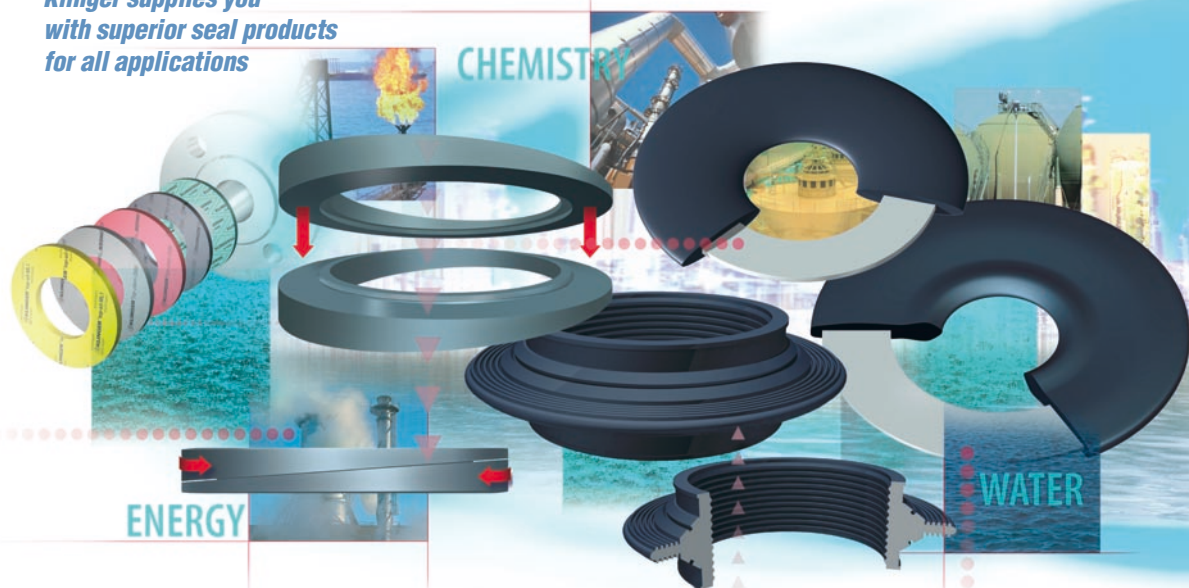
The fixing straps for these sizes are prepared of endless material and have minimum 4 spanner each side. Installation without special tools.

For pipes made of stoneware and cast iron the wall seal ring will be delivered with extra long fixing straps.

DN	Pipe Ø	D1 Ø	D2 Ø	DN	Pipe Ø	D1 Ø	D2 Ø
25	32	29	127	175	200	195	239
32	40	38	136	200	225	215	315
40	50	48	146	225	250	245	343
50	63	60	158	250	280	275	373
65	75	71	169	300	315	310	408
80	90	84	182	350	355	352	435
100	110	105	203	400	400	395	480
125	125	120	218				
125	140	120	218				
150	160	154	252				
175	180	175	273				



Klinger supplies you with superior seal products for all applications



KLINGER Service for your safety: Application overviews, product documentations, tables for media resistance, safety service by fax, original test material and of course consulting on site and custom developments meeting your special requirements.

KLINGER KGS/VD

The seal registered for patent approval compensates oblique flange positions up to approx. 8°.

KLINGER Wall collars

The wall collar protects against humidity penetration in case of infiltration water or ground water.

KLINGER-KGS

The rubber-steel gaskets

Application areas are water, waste water, gas, air, acids, caustic solutions and hydrocarbons with low forces and relatively low temperatures.